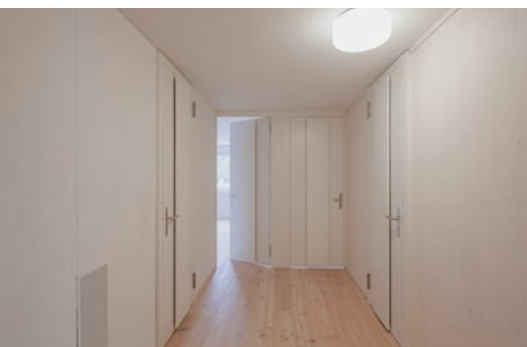


Ventilation through the doors: Illustration of air guidance and air distribution in corridors and rooms.

Connector fan



The connector fan can be installed in any kind of door.



If there is a need for larger quantities of air and even better noise values, active transfer passages can be integrated directly into walls.

Active Transfer Passages | Ventilation through the doors

The Active Transfer Passage is a type of fan that actively replaces the air in enclosed rooms with fresh air – from the corridor, for example. This saves twice the energy: on the one hand through the economical fan, which is only active when the doors are closed. On the other by saving the person-dependent quantity of air in the respectively occupied rooms.

- The Active Transfer Passage is barely audible and insulates against noise just as well as a closed door
- Optimal indoor comfort
- Can be installed in any kind of door; for new builds and conversions
- Minimal expense; can also be retrofitted without noise and dust
- Problem-free service
- Winner of the product competition «Active Transfer Passages» organised by the City of Zurich and the Minergie association

Order further documentation on the Active Transfer Passage through the contact form.

ERICH KELLER AG
 Romanshornstrasse 17
 CH-8583 Sulgen
 Tel. +41 71 644 88 88
 Fax +41 71 644 88 80
 info@erichkeller.com
 www.erichkeller.com